

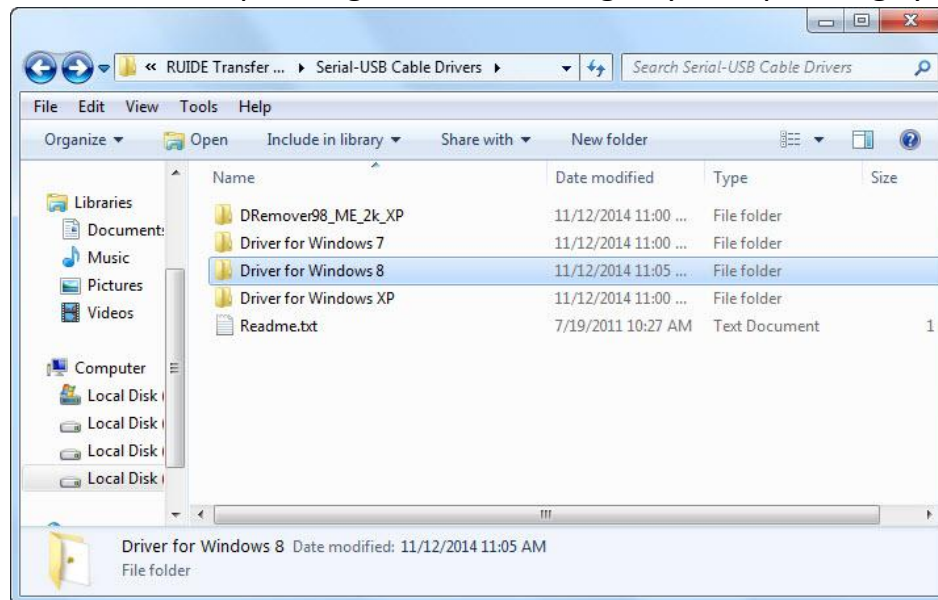
RUIDE Data Transfer Software

## QUICK GUIDE

## 1. Preparation

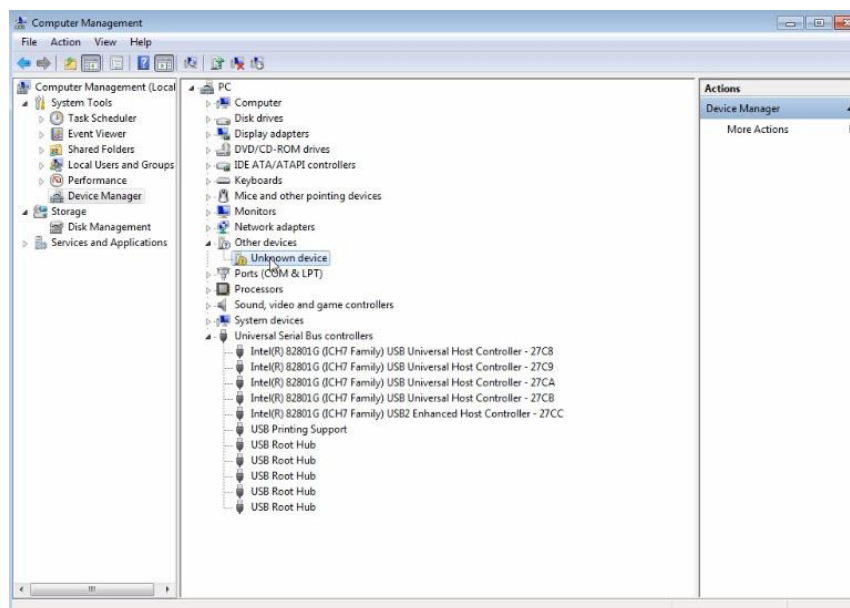
### 1.1 Install the driver for USB-to-com port

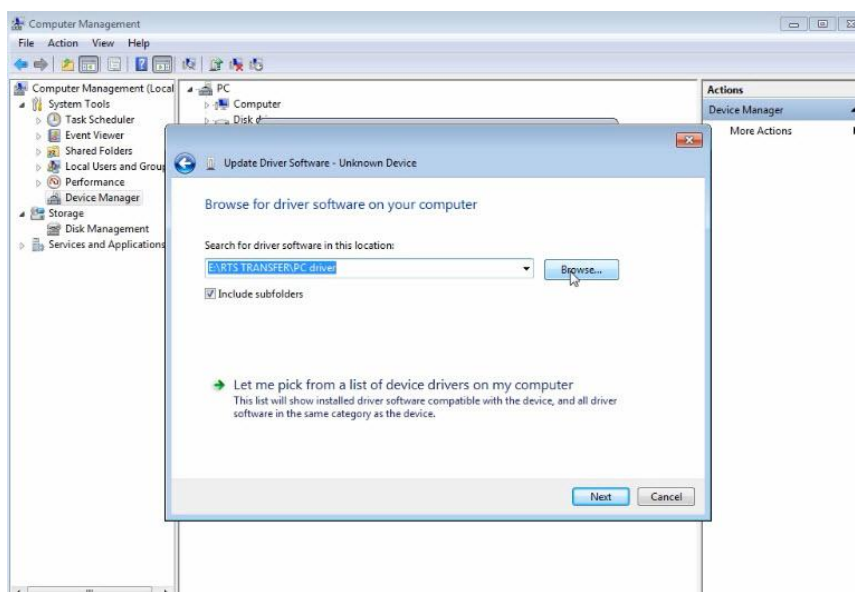
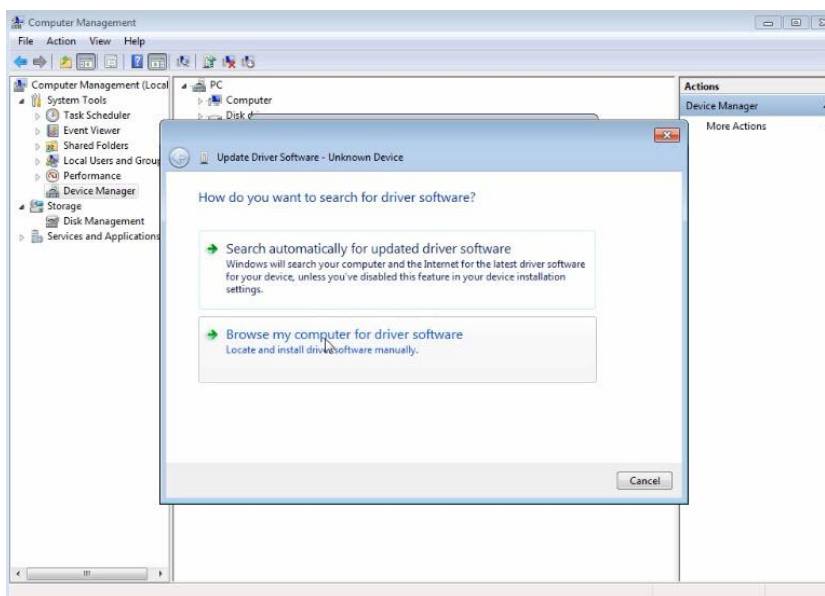
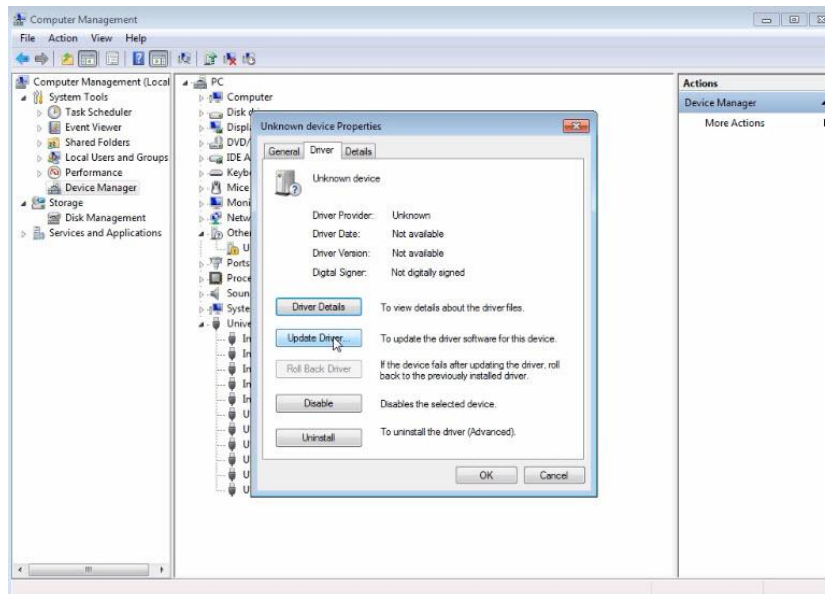
Run the corresponding driver according to your operating system.

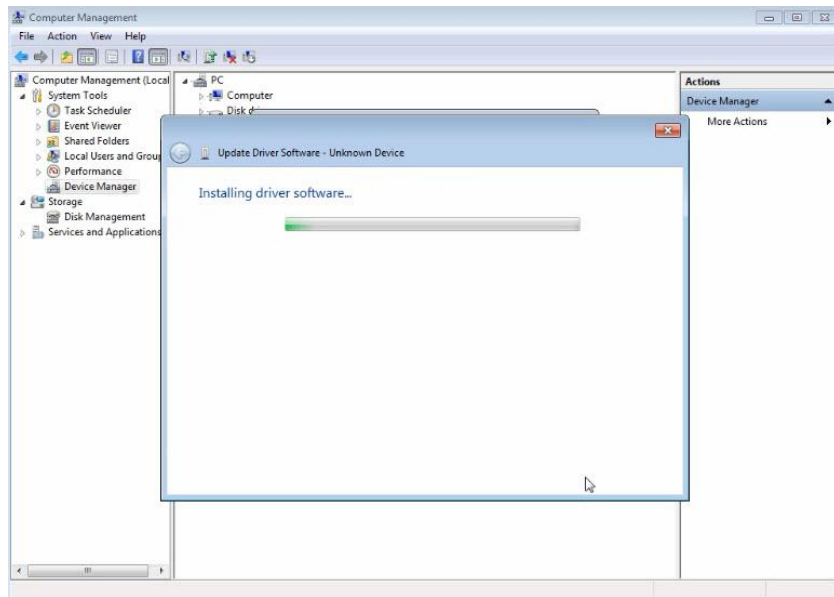


### 1.2 Install the driver for miniUSB cable

Connect the instrument and the total station via miniUSB cable. Then the computer will automatically detect the device and ask for a driver installation. Follow below steps or refer to the video for installing the driver.



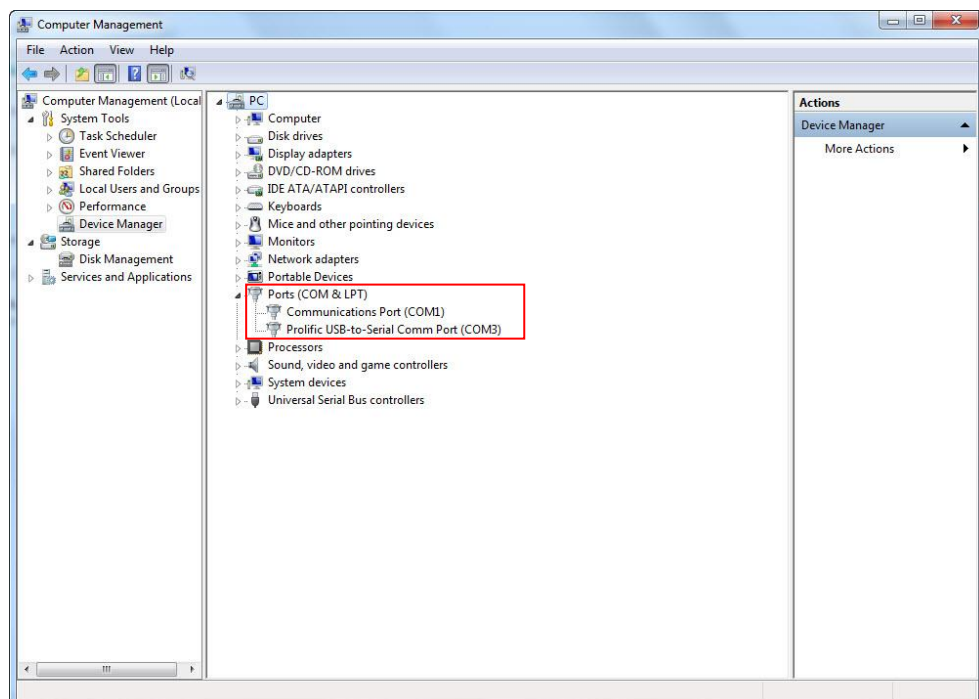




## 2. Transferring via serial cable

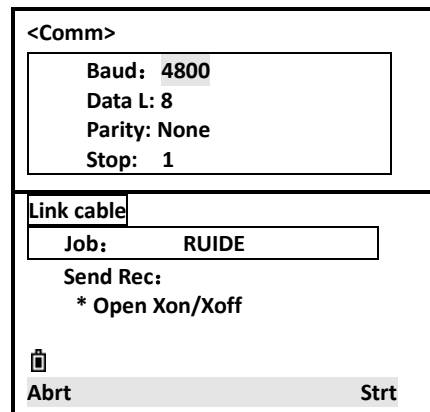
### 2.1 Download

Connect the instrument and the computer with RS232Y cable. Check the com port through My computer--Device manager.



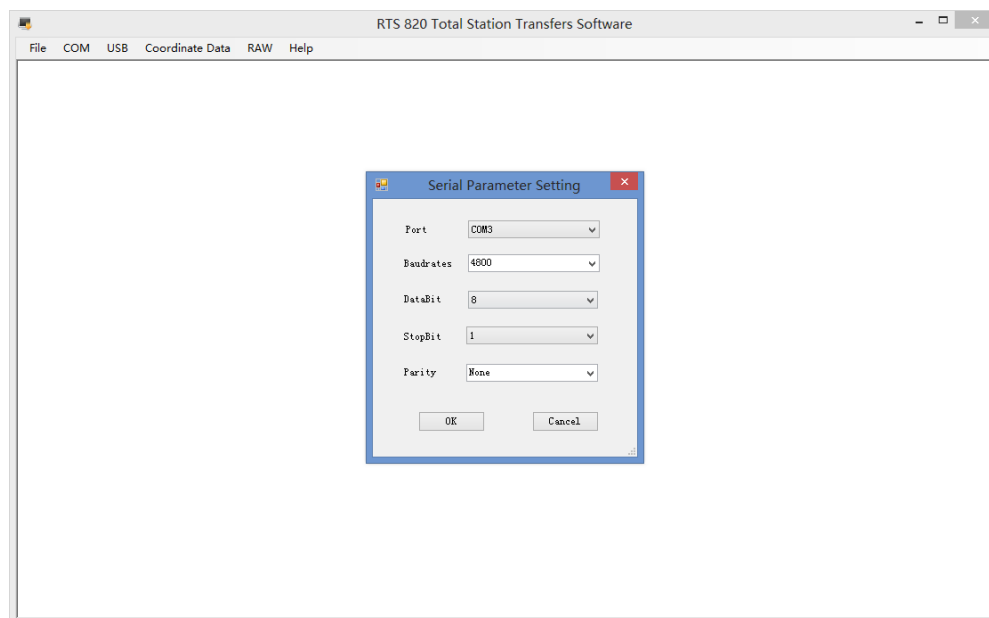
In total station, press "Menu-5.Comm-1.From RS232-1.Send Data",

then press “MSR2.Comm”, set the com parameter. Press ENT to confirm. Then “MSR1.Job” to select the job to be downloaded. Choose the data type (raw data or XYZ data) to be downloaded. Then press ENT to make the instrument ready for transferring.

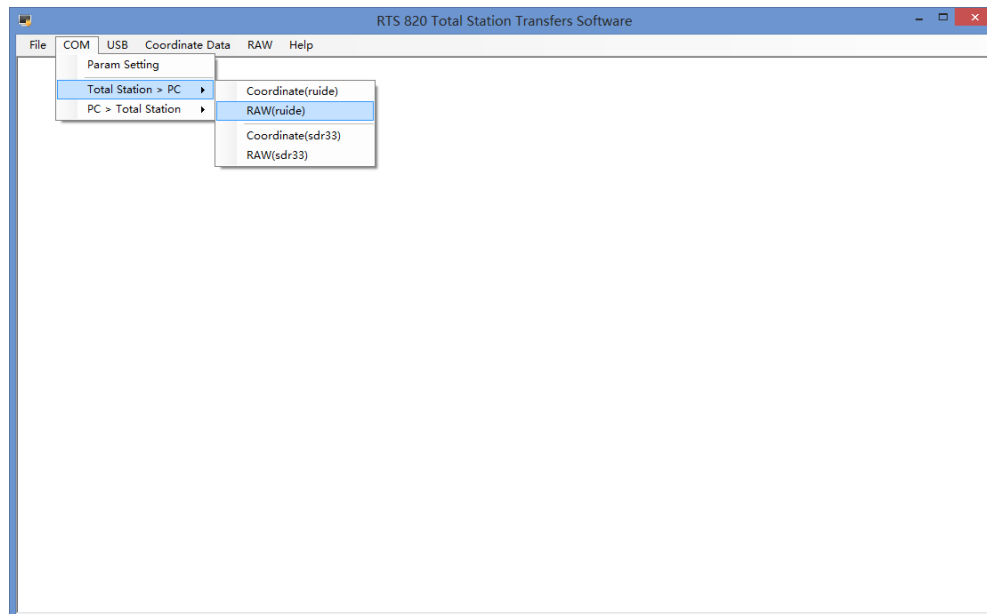


The screenshot shows a menu titled "<Comm>". Inside, there is a box containing the following parameters: Baud: 4800, Data L: 8, Parity: None, and Stop: 1. Below this box, there is a "Link cable" label, a "Job:" field with the value "RUIDE", and a "Send Rec:" section with the option "\* Open Xon/Xoff". At the bottom, there is a small icon of a document and two buttons: "Abrt" and "Strt".

Run the data transfer software, click “COM-Param Setting”, make all the parameters to be exactly the same as total station. Then click OK to set.



Click “COM-Total station>PC-RAW or Coordinate”.

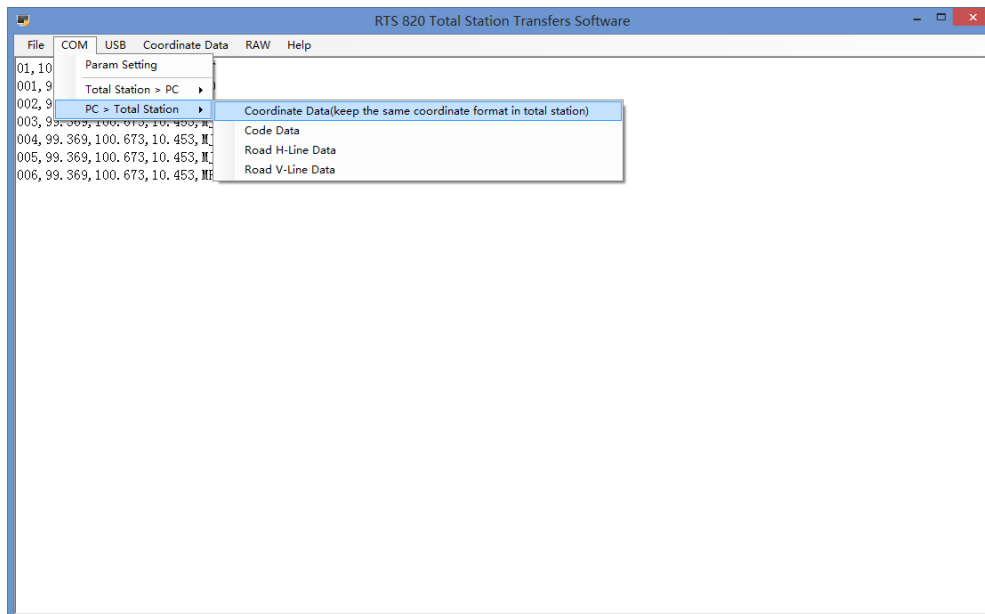


Follow the instruction of the pop-up window. Click OK on computer, then press ANG.Strt in total station. It will start downloading the data.

## 2.2 Uploading coordinates

In total station, press “Menu-5.Comm-1.From RS232-2.Load Data”, then press “MSR2.Comm”, set the com parameter. Press ENT to confirm. Then “MSR1.Job” to select the job to be uploaded to. Press DIS. Edit to edit the coordinate order to be the same as software. Then press OK to get ready for import.

In the software, click COM-PC>Total Station-Coordinate Data, follow the instruction of the pop-up window. Press ANG.Strt on total station, then click OK on computer.



### 3. Transferring via miniUSB

Connect the instrument and the computer with miniUSB cable.  
Make sure that the driver is installed well and the device is working.

In total station, press “MENU-5.Comm-2.From USB” and refer to chapter 2 for downloading and uploading.

### 4. New feature

The function of “RAW-Measured data to...” is a new feature for this transfer software, it can convert the raw data to an txt file with below information:

Station point, Backsight point, Orientation HZ, Instrument height, Sideshot point, Target height, slope distance, HZ, Vertical angle, Code.